

# RemoMail



- **Access up to 7 Email Accounts (Hotmail, Yahoo, GMail, AOL, Office Mail)**
- **Internet Accounts are Pre-configured, Enter UserName and Password**
- **Configure POP or IMAP with SSL – Enter IP Address, UserName, Password**
- **Supports IMAP Push for one Account, With Proxy 3 Accounts Supported**
- **Supports both CDMA and GSM Phones – Size Varies 60KB to 450KB**
- **Desktop Functionality: Search, Read, Reply, Forward, Compose, Delete**
- **Integration of Phone Contacts, Save Incoming Email Addresses to Contacts**
- **Security: SSL, Remote Data Wipe when the Phone is Lost or Stolen**
- **Attachment Viewer: Server Solution, View MS Office, PDF Documents**

# RemoMail Features

**Internet Email Access – Yahoo, Google, AOL, Hotmail, MSN, etc**

**POP and IMAP – Configure for Direct Access to Exchange, Lotus Notes**

**Integration of Phone Contacts**

- **Save email addresses to Contacts from incoming email**
- **Retrieve email addresses from Contacts during Compose, Forward**
- **Contact Groups**
- **Predictive Contacts during Compose**

**Desktop functionality**

- **Compose, Reply, Reply All, Forward, Send, Edit, Delete, Purge**
- **Sent mails from Phone will be stored in Sent Items folder in Outlook**
- **Search Emails from any Folder by using – From, Subject, Since Date**
- **Goto page – Retrieve the emails from anywhere in the folder**

# RemoMail Features

## Folder Management

- Hierarchical Folder Management up to 15 Levels
- Drafts, Archives Folders

## Attachment Support

- View Attachment Names
- View HTML, Text, Image, JPEG, MPEG files
- Forward with any Attachments

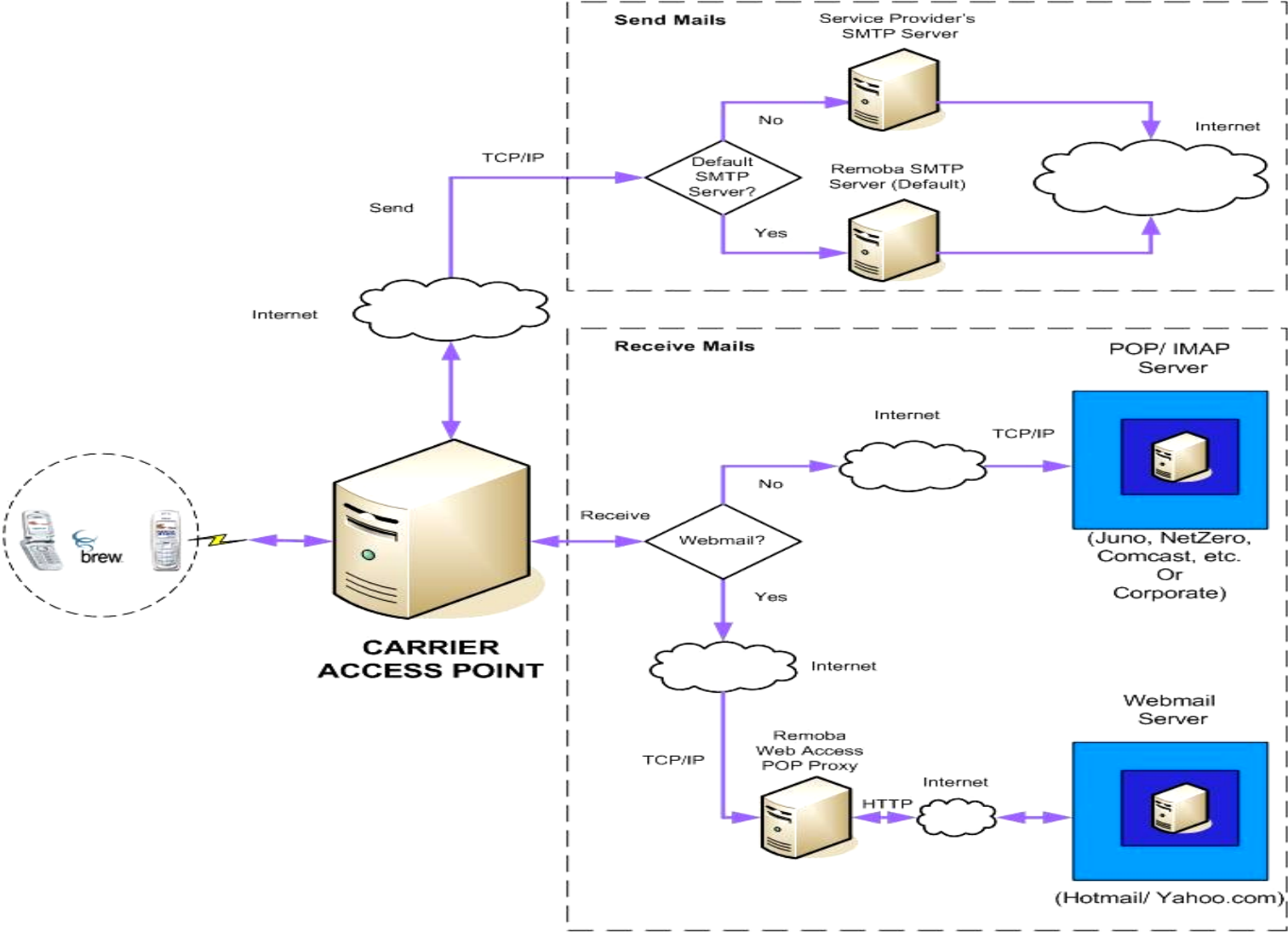
**Security – SSL support for Data Transmissions, Login PIN, Automatic Logout**

**Poison Pill – Wipes out the Contacts and any Folders when the Phone is Lost**

**Quick messages – 50 messages can be configured for Quick and Easy Replies**

**Supports both English and Spanish Languages**

# RemoMail Architecture



RemoMail Architecture Overview

# RemoMail Screen Shots

